

Vanasse & Associates, Inc.
Transportation Engineers & Planners.



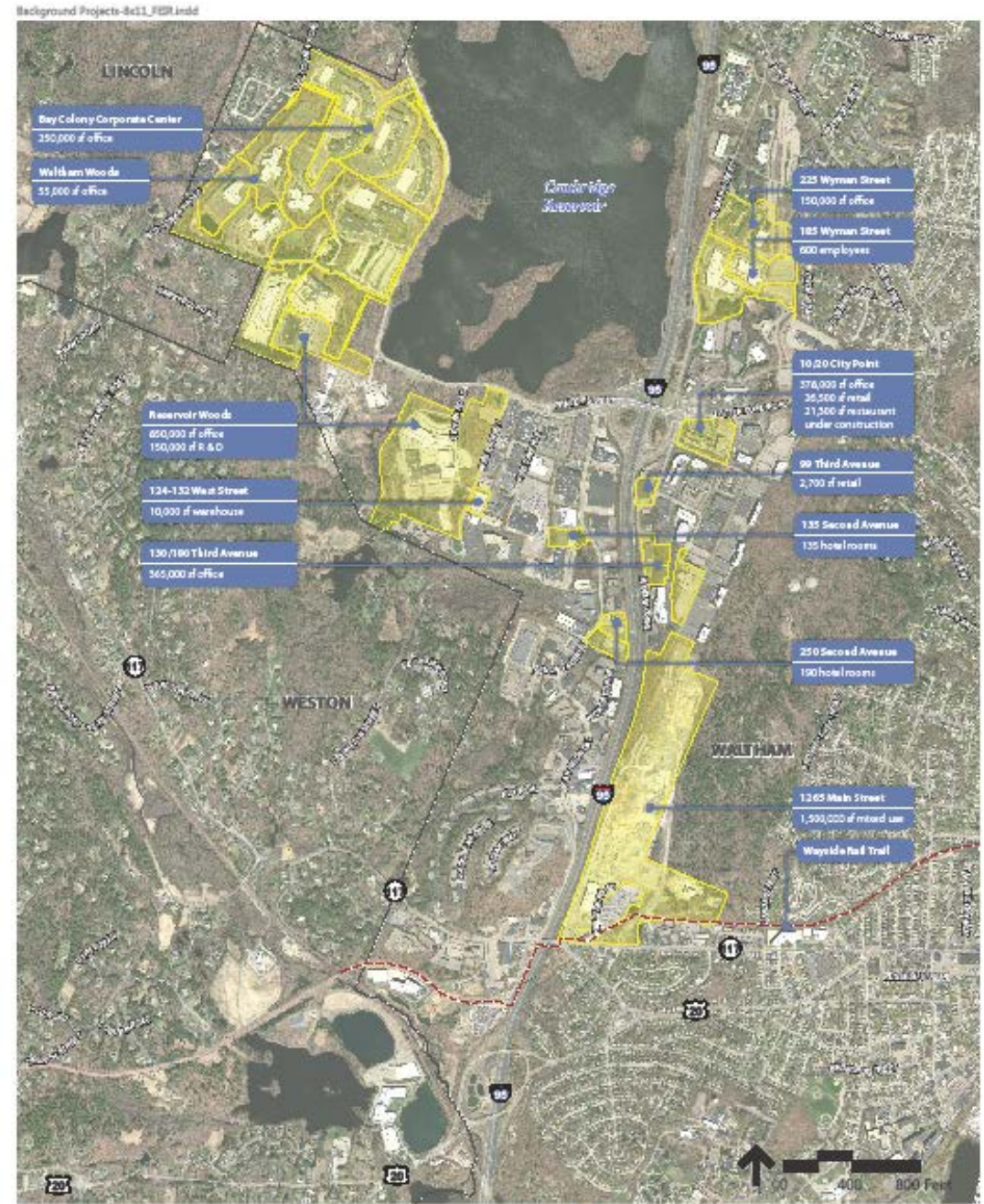
Waltham Traffic Commission Route 128 Corridor Local Roads Update

Presented by
City of Waltham, VHB, VAI

April 26, 2017

Known Developments

- Over 3.5 MSF of building space planned and permitted along this corridor
 - 2.9 MSF of office space
 - 230 KSF of retail space
 - 625 hotel rooms
 - Various fitness, warehouse, and other uses as well
- Potential for an additional 1.5 MSF of development ranging from office to residential to retail as well.



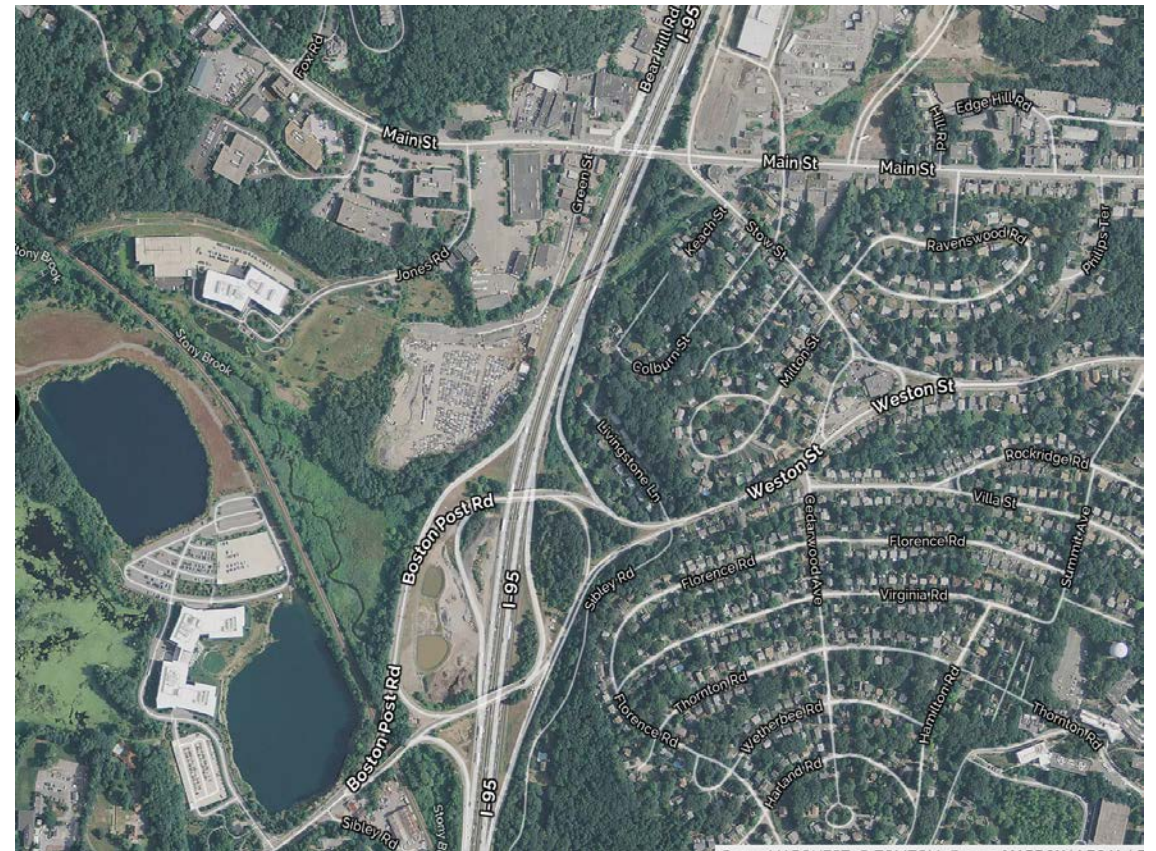
Planned or Approved Development



Figure 2.10
Planned Development Projects

Southern Area of the Corridor

- Access through residential neighborhood
- Limited and antiquated transportation infrastructure
- Multiple development opportunities



Route 20 Corridor Changes



Route 117 and Green Street Changes



Third Avenue Upgrades and Interchange Modifications





Bear Hill Road – Center Turn Lane Plus Northbound Bike Lane

Locus Plan



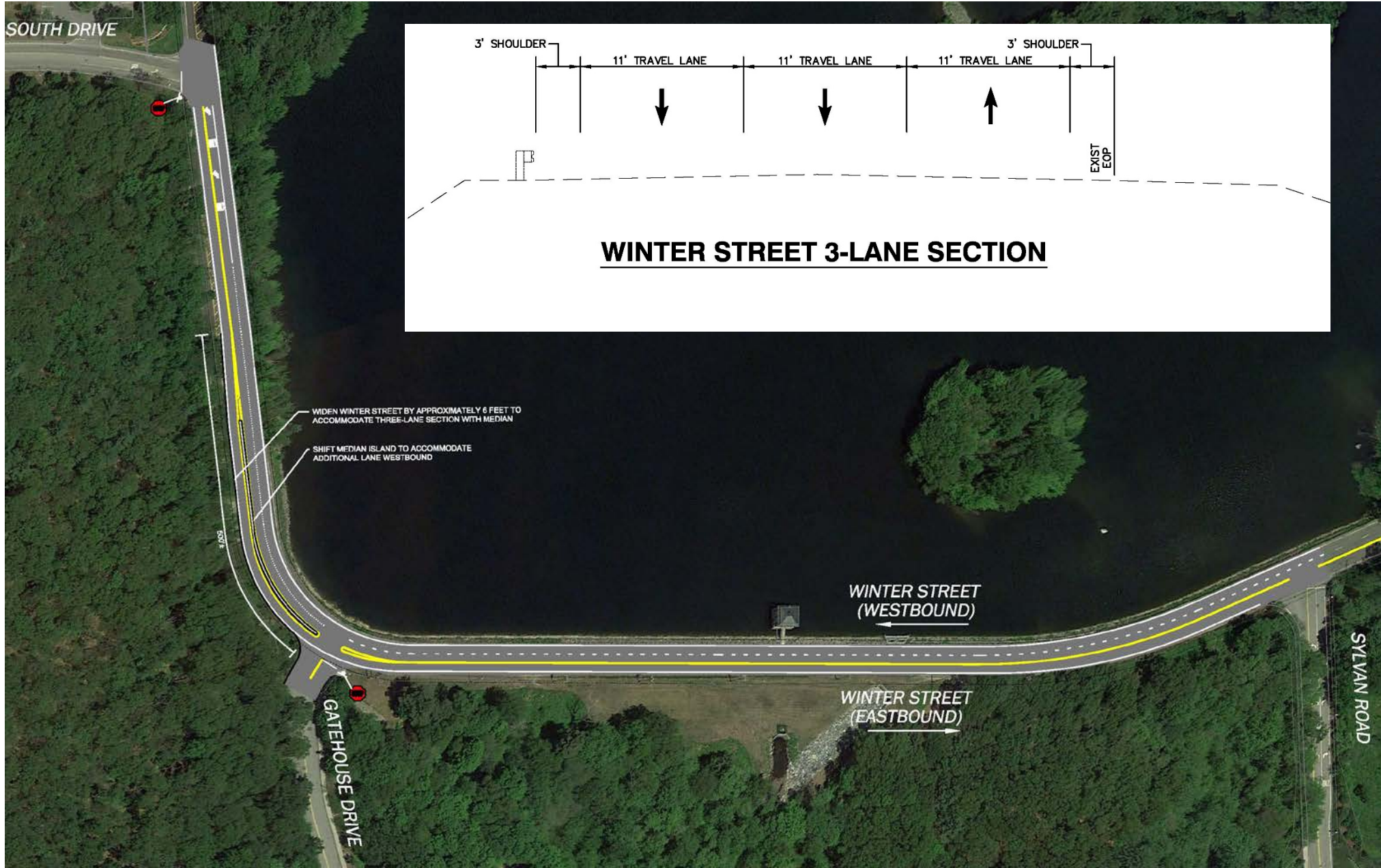
Winter Street Improvements



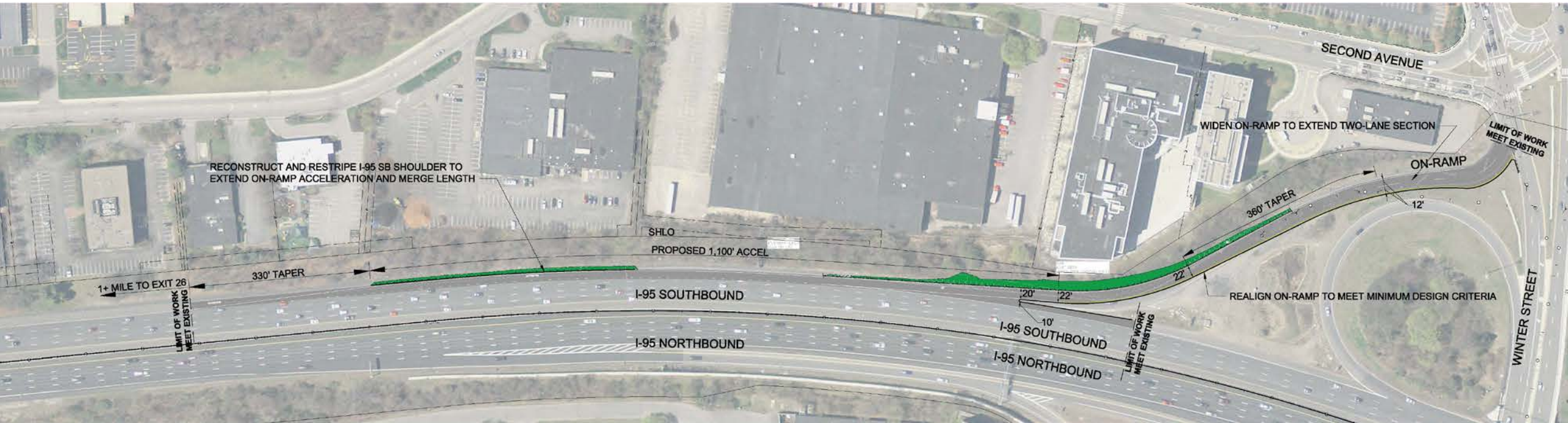
Winter Street Improvements at First Avenue and West Street



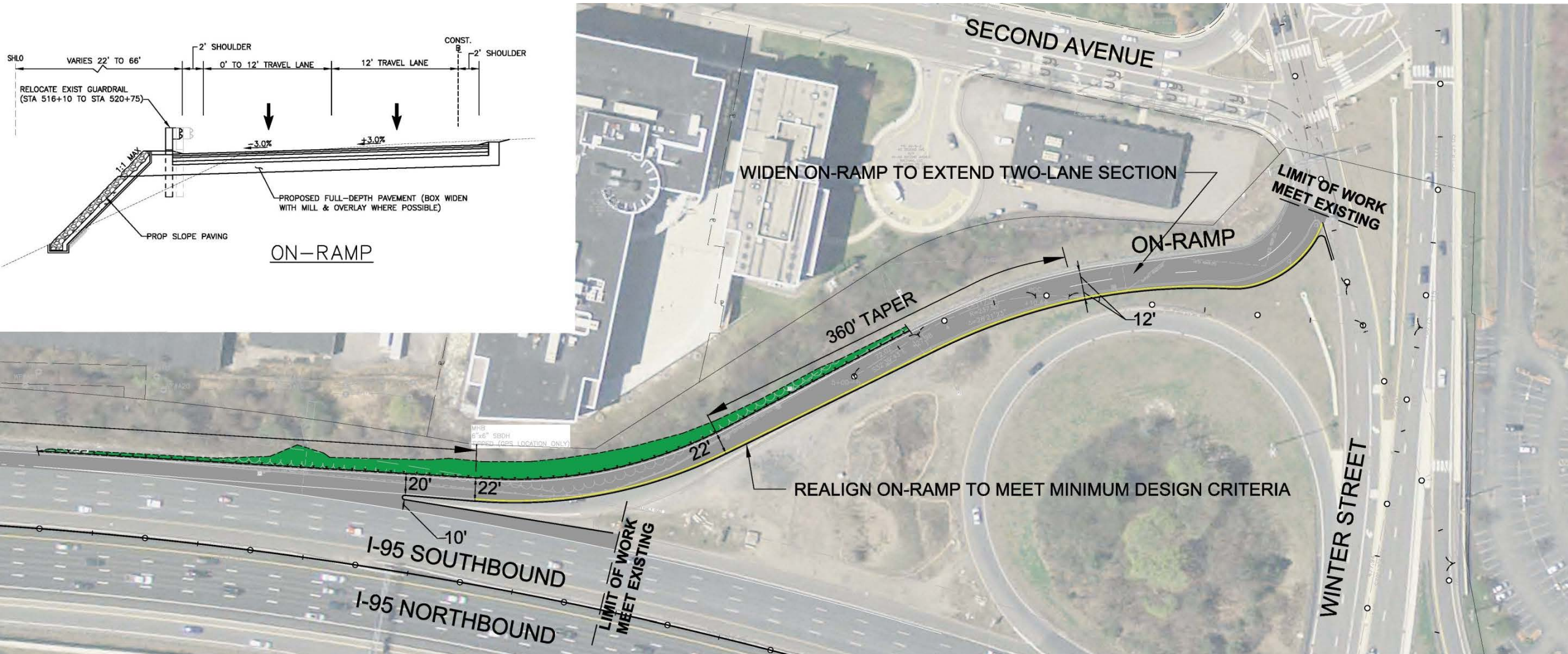
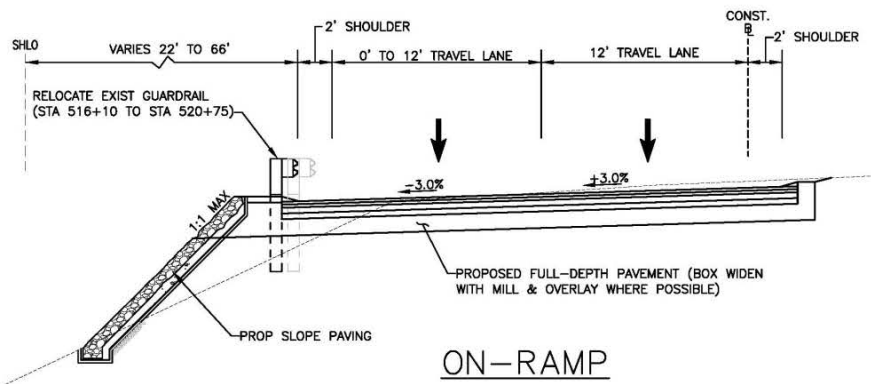
Winter Street 3-Lane Section



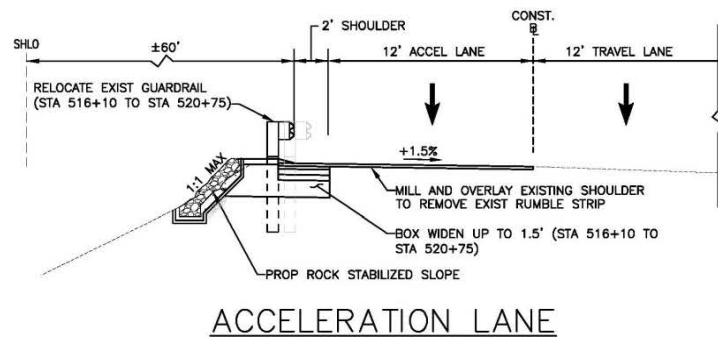
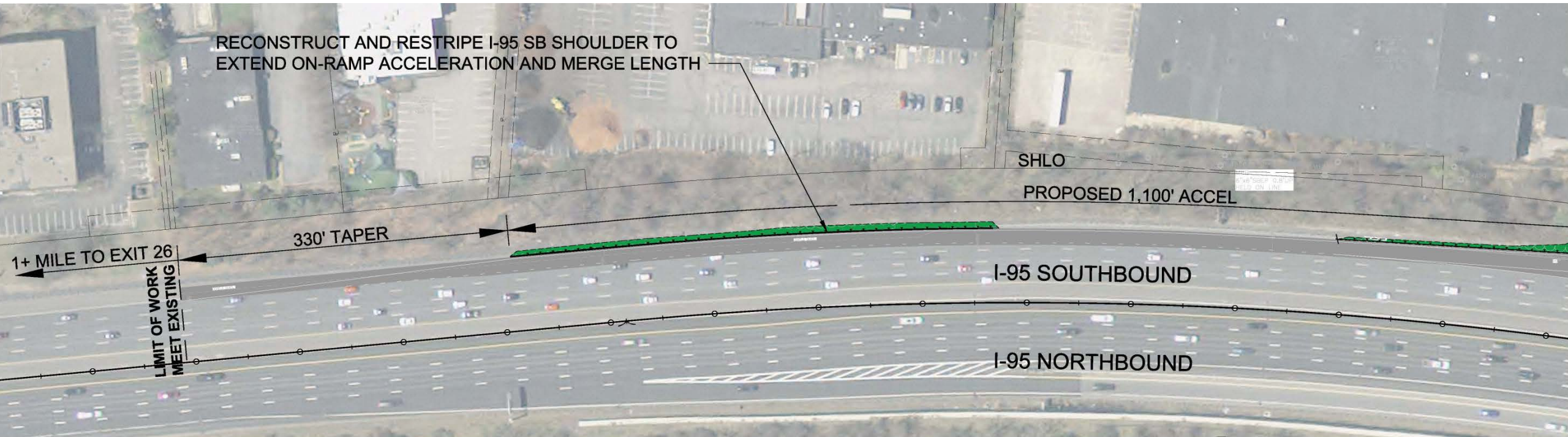
Winter Street On-Ramp to I-95 Southbound Improvements



Winter Street On-Ramp to I-95 Southbound Improvements



Winter Street On-Ramp to I-95 Southbound Improvements



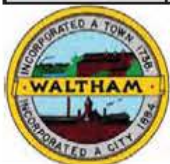
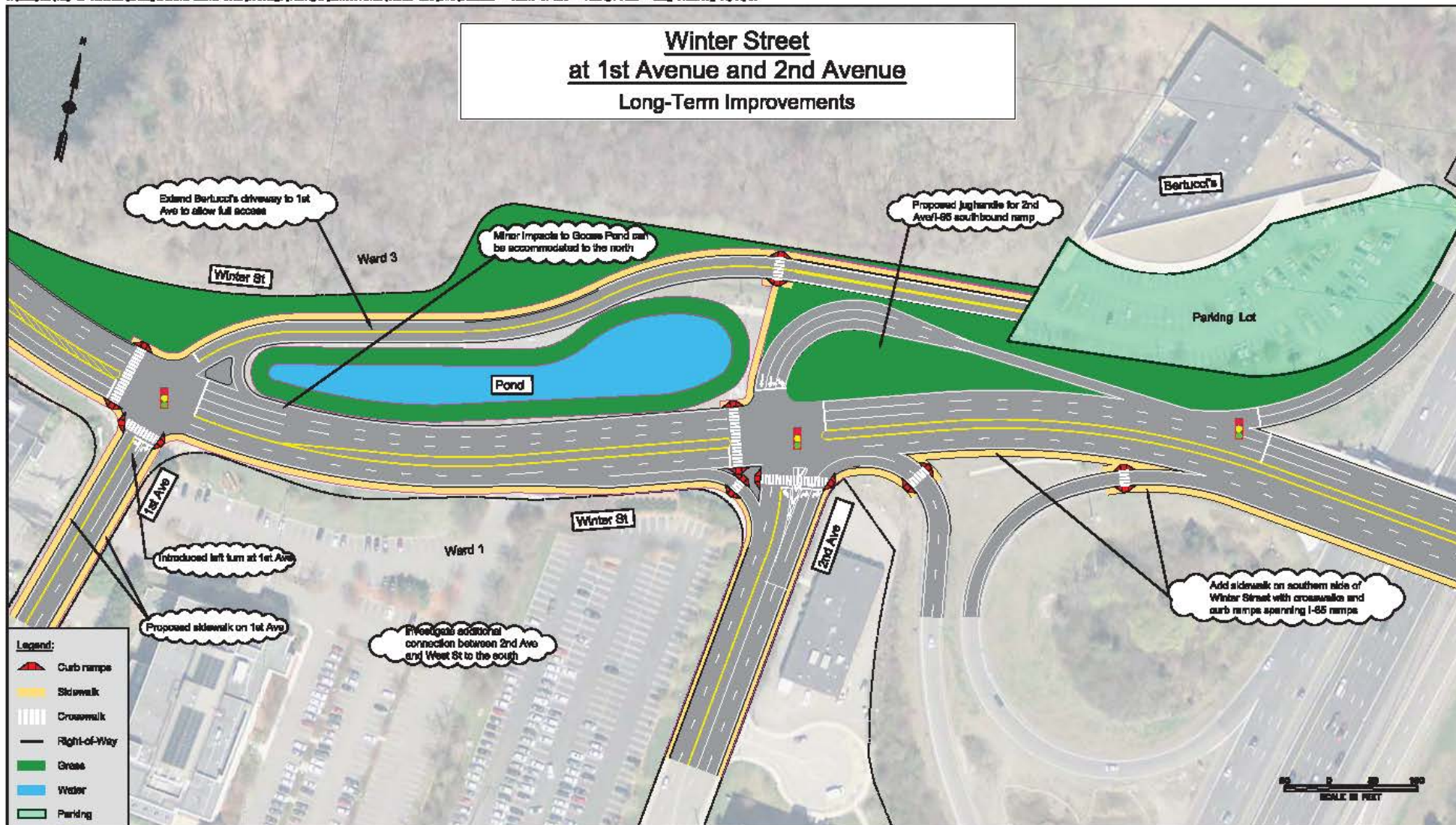


Figure 5-17
Winter Street Long-Term Improvements
City of Waltham Transportation Master Plan
Waltham, Massachusetts

New Connection Between 81 and 175 Wyman Street



Michael Garvin | mgarvin@city.waltham.ma.us

Robert Nagi | rnagi@vhb.com

Steven Boudreau | sboudreau@rdva.com

